

Water Features

Swimfit Counter Current Unit



Discover a new way to enjoy your pool – and exercise at the same time! The Swimfit Counter Current system is especially designed with small private pools in mind. With a Swimfit Counter Current installed in your pool you can swim as far as you like, for as long as you like.

The system is equipped with a 3HP pump to create a counter-stream of water which allows you to swim on the spot. The adjustable current means that swimmers of all levels can swim at their own pace for as long as they like. The directional inlet allows a 15-degree inclination in any direction and also features an adjustable air/water mixer for a relaxing bubble massage effect.

What's included

- Faceplate assembly & housing with jet
- On/off controls
- 3 HP pump (1 or 3 phase) with connection accessories (2 x elbows, 2 x valves – pipework not included)
- Control box to activate the pump via the controls on the faceplate.

Specifications:

- Flow Q_{max} - 40m³/h
- Pump Capacity - 3HP
- Electrical requirements - 220v or 380v
- Water return connection - Ø 90mm
- Water impulsion connection - Ø 75mm
- Air tube connection - Ø 20mm
- Flexible Pipe - Ø 2 x 3.5
- Adjustable jet - Ø 41mm
- Max. angle adjustment of jet - 15°

The Swimfit counter current is also suitable for installation with a 4HP pump - please contact us for a quotation.

A - Faceplate Assembly & Housing

Code	Description	Price Euros €
SFBC	Concrete pools	
SFBPF	Liner pools (includes gaskets, fittings and screws)	
SFBL	Prefabricated pools (includes gaskets, fittings and screws)	

Kits Include: Faceplate assembly with nozzle on/off button, and housing assembly

B - Pump Kit

P3HPK-M	Pump 1 Phase - 3HP - inch fittings	
P3HPKM/M	Pump 1 Phase - 3HP - metric fittings	
P3HPK-T	Pump 3 Phase - 3HP - inch fittings	
P3HPK-T/M	Pump 3 Phase - 3HP - metric fittings	

Kits Include: Pump, 2 x Elbows, 2 x Valves. Pipe excluded.

C - Control Box

CBCC-M	Electrical control box - single phase	
CBCC-T	Electrical control box - three phase	

The control panel activates the pump via the on/off button on the faceplate and assembly.

Installation

The housing should be installed during pool construction. The Swimfit Counter Current can be purchased in component form as follows;

A – Faceplate assembly & housing

B – Pump kit

C – Control box

Only the Faceplate assembly & housing is required at the pool construction phase, which means that, for a relatively low cost, the pool can be constructed ready to install the complete Counter Current at a later date if required. The pump should be installed as close as possible to the pool for maximum performance (within IEE regulations)



Endless Pools Fastlane - Counter Current Unit



Easy Installation & Maintenance

Roll the Fastlane across your pool deck and drop it into the water. Simple hydraulics means no electricity poolside.

Fits Anywhere

Free form or rectangular; gunite, vinyl or fibreglass; new construction or retrofit – the Fastlane puts the swim into any swimming pool.

Swim Without Turning

Pool too short for a good swim?

A Fastlane lets you swim for as long as you like without turning. Adjust the Fastlane to your pace and enjoy swimming in a smooth, even, river-like current.

Kid Endorsed

Swimmers love the quality of our adjustable-speed, swim current – kids love it because it's just plain fun. A Fastlane transforms your pool into a waterpark.

Fastlane - Features

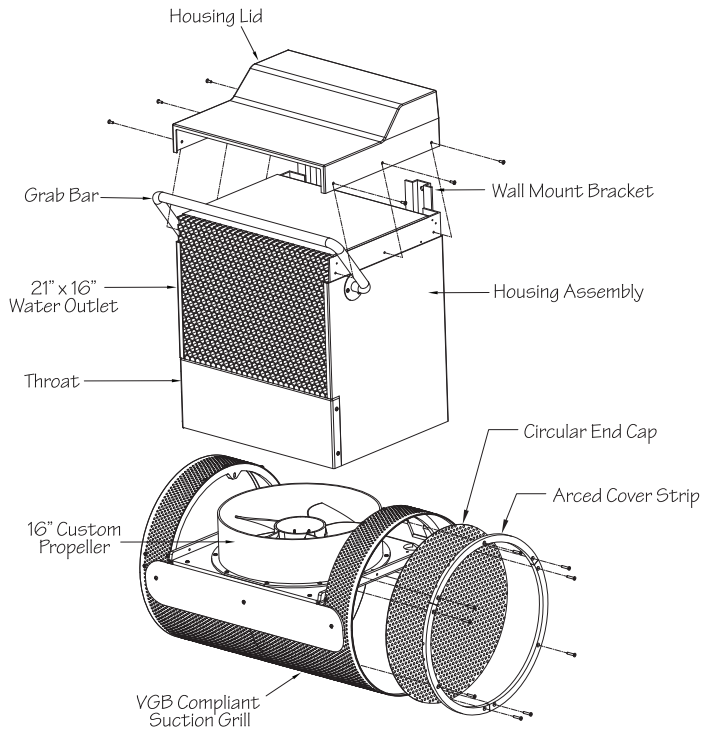
- Can be fitted in virtually any pool.
- Minimum water depth required is 35".
- 16" propeller
- Remote controlled.
- Adjustable speed setting suitable for all swimming levels.
- Ideal for exercise, therapy and fun.



Endless Pools Fastlane Units

Code	Description	Price Euros €
EPFLW/SL/NT	Fastlane unit - in wall - for new builds or renovations - silver acrylic	
EPFLW/SB/NT	Fastlane unit - in wall - for new build or renovations - sapphire blue	
EPFL/SL/NT	Fastlane unit - deck mount - for existing pools - silver acrylic	
EPFL/SB/NT	Fastlane unit - deck mount - for existing pools - sapphire blue	
EPFL7	Fastlane floor mirror	
EPFL9	Fastlane swim pace LED display	
SPEP4K	Fast lane deck riser kit (for shallow pools)	

Endless Pools Fastlane - Counter Current Unit



Specifications

Water Inlet: 6 sided, 5 square foot inlet grill

Water Outlet: 21" x 15" shock resistant, hexagonal, ABS grill

Swim Speed Control: Water-resistant, wireless, remote control.
52 discrete programmable speeds.
Maximum 66 second 100 yard pace (5-HP).
Maximum 58 second 100 yard pace (6-HP optional).

Swim Pace Display: 6" high-visibility digital LED display (optional). Modular phone jack connection

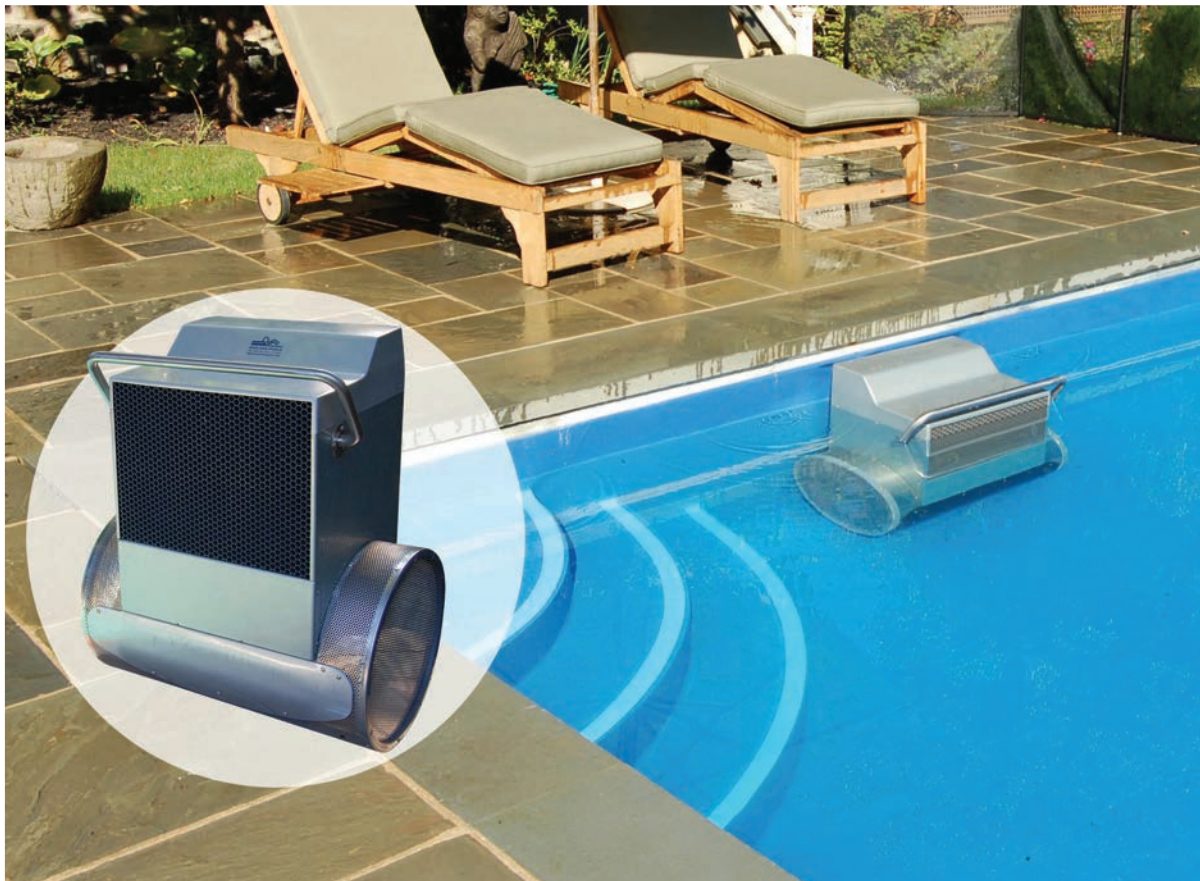
Swim Propulsion Unit: Hydraulically-powered, 16", low-turbulence propeller with proprietary water straightening technology. 122 lbs. (including rails)

Hydraulic Power Unit: 5HP

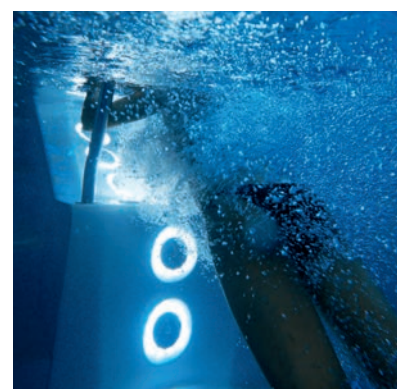
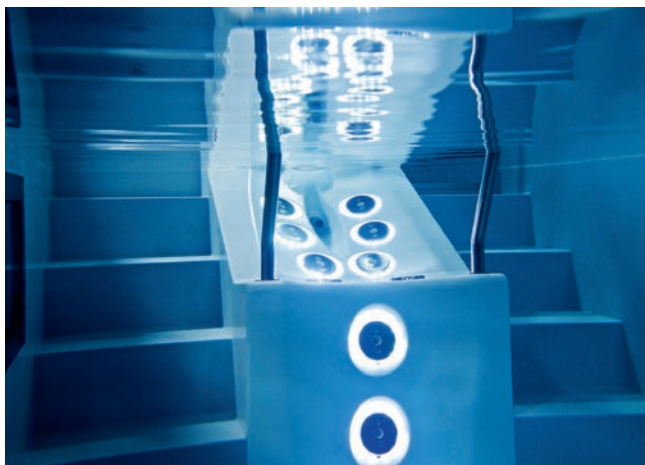
Electric Requirements: 208-240 volts, 50 Hz, 32 Amp 'C' Rated fuse

Warranty: 2 Year

5000 US gallons per minute



Floating Lounge



Floating Lounge - The concept adapts itself to the individual. The power and duration of the jets can be adjusted, thanks to its selective programming, men and women, whatever their age or whether they are sporty or not, can use the Floating Lounge.

For Everyone

- Mending, improving or perfecting your body.
- Toning your skin
- Shedding excess pounds, feeling comfortable with yourself
- Improving your over all shape
- Boosting your defence systems
- Detoxing
- Improving blood circulation
- Regulating your vegetive nervous system
- Boosting your metabolic rate
- Toning and strengthening muscles throughout your body
- Increasing flexibility in your joints
- Support your back
- Getting into shape gently
- Strengthening your spine's muscular system
- Helping you get back into sport or train for an event
- Massaging you by working all the muscles
- Improving your breathing
- Calming you: helping to unwind and destress so you can really relax

For Women

- Reshape your lower body (saddle bags, inner knees, buttocks, inner thighs, waists)
- Speed up the elimination of water and fatty tissue, reduce your cellulite
- Boost your circulation
- Tone your muscles

For Men

- Keep up your muscle tone
- Shed any extra weight around the stomach
- Rebalance your muscular system

Examples Of What It Can Be Used For

Foot & knee exercise: stretching calves, crawling, treading water

Position = Standing facing the apparatus without holding on

Jet = Training current

Exercise = Running on the spot, jumping, jogging, buttock kick running with or without arms, back jump stretching, alternate knee lifts, squats

Exercises for the hips: lunge position, straddle, crawl leg movements

Position = Standing facing the apparatus holding the hand rails

Jet = Training current

Exercise = Jumping with feet together, jumping with knees together, scissor jumps, stretching, single-leg stretching, jumping squats, high knee lift running

Exercises for the spinal column: side stretching, foetal position, toning abs

Position = Lying on the back

Jet = LIBRA leg zone

Exercise = Bring the knees to the chest, cycle movement, swing legs to the left and right with knees together, rock the pelvis

Exercises for the shoulders and arms: stretching, stretching and rotation, stretching and relaxing, stretching the shoulders, stretching the flexor muscles, stretching the extensor muscles, float work, standing backstroke

Position = On the stomach

Jet = LIBRA back zone

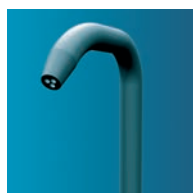
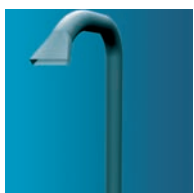
Exercise = Take hold of the handles and lift the chest, push against the handles while kicking the legs

For full design, support and technical details please contact the Export Department on +44 (0) 1993 700744

Fluvo Water Features



For a relaxing massage or an attractive water feature, a Fluvo water curtain is an ideal addition to any pool



Step 2

Guide To Selecting Water Features

- STEP 1** Installation kit
- STEP 2** Features / assembly kit
- STEP 3** Select pump for required duty
- STEP 4** Air switch (optional)
- STEP 5** Don't forget suction grilles



Step 1

STEP 1 - Installation Kits - Water Curtains

Code	Description	Price Euros €
FL91533	Curtain Installation kit	

STEP 2 - Water Curtains @ 30m³/hr

FL92618	Cobra Curtain 30m ³ /hr	
FL93385	Straight Curtain 30m ³ /hr	
FL94460	Flat Jet Curtain 30m ³ /hr	
FL94462	Tri Jet Curtain 30m ³ /hr	

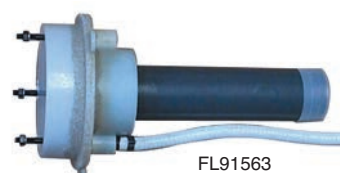
Note: Water Curtains are manufactured in grade 316 stainless steel with a brushed finish. White powder coated is available - please contact Certikin on 01993 778855



Suitable for wall and floor installations



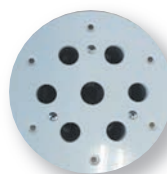
Step 1
FL91352



FL91563

STEP 1 - Installation Kits - Massage Jets

Code	Description	Price Euros €
FL91563	Wall Installation kit for concrete / tile & liner pools (DN 63)	
FL91352	Floor Installation kit 90° for concrete / tile & liner pools (DN63)	



Step 2

STEP 2 - Massage Nozzles - Massage Jets @ 22m³/hr

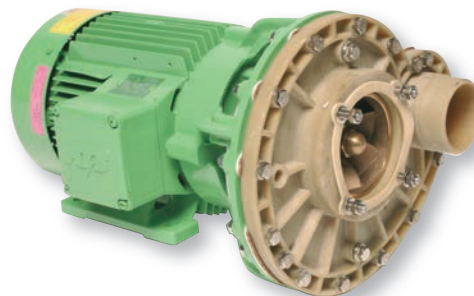
FL91565	Massage nozzle 22m ³ /hr - concrete / tile	
FL91566	Massage nozzle 22m ³ /hr concrete / liner	

Fluvo Water Features

- Fluvo pump kits consist of centrifugal pump, motor switchgear cabinet with pneumatic control.
- Pumps available in 50Hz single and three phase motors
- Pumps suitable for salt water
- All pumps are IE2 rated

STEP 3 - Pump Kits

Code	Description	Price Euros €
FL94446/1	1.90kW 230v 1 phase pump Q@10m 48m³/hr	
FL94446	1.90kW 400v 3 phase pump Q@10m 48m³/hr	
FLCG700P	1.5kW 230v 1 phase pump @ 42m³/hr - plastic	
FL94445	1.5kW 230v 3 phase pump @ 42m³/hr - plastic	



STEP 4 - Air Switch - Installation Kit

FL93748	Air switch installation kit for concrete / tile & liner pools	
---------	---	--

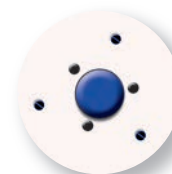


Step 4

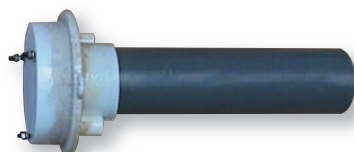
STEP 4 - Air Switch Button

FL93749	Air switch button - concrete / tile pool	
FL93750	Air switch button - concrete / liner pool	

Also available in stainless steel



Step 4



Step 5

STEP 5 - Suction Grilles - Installation Kits

FL91538	Installation kit for concrete / tile & liner pools (DN100)	
---------	--	--



Step 5

Larger Grilles are available for multiple features. Please contact us for a quotation.

Suction Grilles:

All suction grilles that are capable of being connected to the full suction pressure of the pump system, should be connected to at least two separate outlets at least 2 metres apart.

STEP 5 - Suction Grille

FL91539	Suction grille - concrete / tile pool (max 15m³/hr)	
FL91561	Suction grille - concrete / liner pool (max 15m³/hr)	

Material - White ABS (ST/ST available)

Maximum flow 15m³/hr @ 0.5m/s

Planning and Installation manuals
for Fluvo products available on request.
Call Certikin for advice and information.

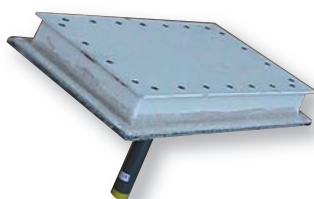


Fluvo Air Bubble Features

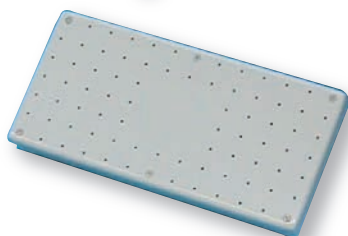


Guide To Selecting Air Bubble Features

- STEP 1** Installation Kit
- STEP 2** Features / Assembly Kit
- STEP 3** Select Air Blower For Required Duty
- STEP 4** Air Switch (optional)



Step 1



Step 2

STEP 1 - Installation Kits - Air Pad / Bubble Seat

Code	Description	Price Euros €
FL93937	Installation kit - concrete / tile pools (DN 32)	
FL93938	Installation kit - concrete / liner pools (DN 32)	

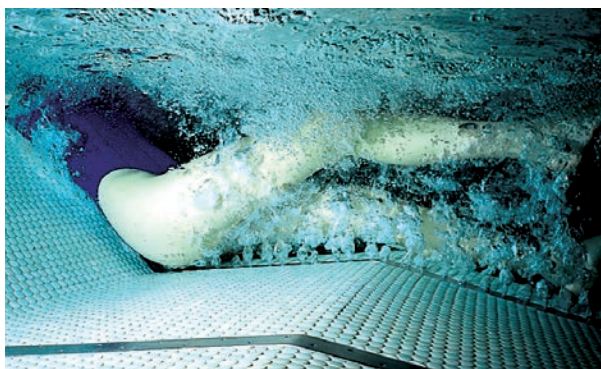
STEP 2 - Air Pad / Bubble Seat @ 45m³/hr

FL93939	Air pad 500 x 250mm - concrete / tile pools	
FL93950	Air pad 500 x 250mm - concrete / liner pools	

Air pad material: White ABS

Alternative sizes available in 316 St/St

All air lines should include an air loop at least 500mm above water level.



STEP 1 & STEP 2 - Air Lounger @ 45m³/hr

Code	Description	Price
FL91804	Grade 316 S/S. Air lounger includes installation fixings (DN 50)	



Step 3

STEP 3 - Air Blower @ 45m³/hr & 90m³/hr

FL95112	0.9kW Air blower @45m ³ /hr connections 1.5"	
FL93666	1.2kW Air blower @90m ³ /hr connections 2"	

Note: Air blowers 50Hz 3 phase electrical supply.
Please call Certikin for 1 phase options.

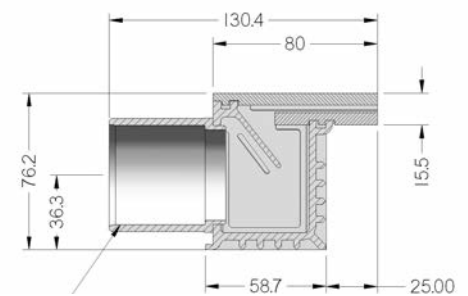
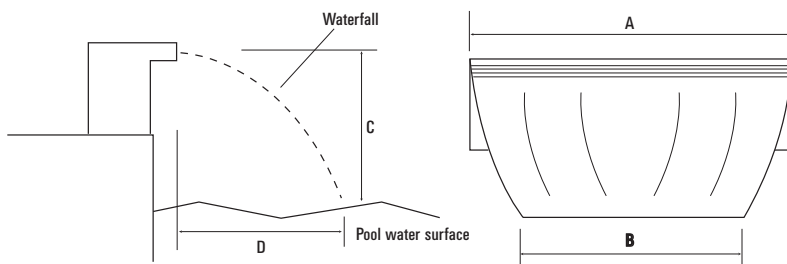
Decorative Waterfalls



ABS Waterfalls

Can operate with pool filtration return circuit, or with a dedicated pump.

Code	Description	Price Euros €
VC1300	Waterfall 300mm	
VC1600	Waterfall 600mm	
VC1900	Waterfall 900mm	
VC11200	Waterfall 1200mm	



Suit 40mm PVC pipe

Specifications For Waterfalls

	Required Flow l/min	Required Pump HP	A	B	C - Recommended height	Distance to water at recommended height
VC1300	50	0.5	300mm	200mm	300mm	300mm
VC1600	100	0.5	600mm	500mm	600mm	600mm
VC1900	150	0.75	900mm	800mm	900mm	900mm
VC11200	200	0.75	1200mm	1000mm	900mm	900mm

Play Gear - Children's Water Features



Interactive!

Manufactured from brightly coloured GRP, many features have built-in mechanical hand pumps allowing children to activate water sprays from various nozzles simply by pressing the pump handle.

Just Fun!

A highly cost effective way to enhance any leisure centre, swimming pool, holiday park, paddling pool or theme park. Manufactured to the highest standards, they feature ultra-violet and water chemical resistant coatings, bright glossy colours and smooth rounded edges for maximum safety, guaranteed to appeal to kids of all ages.

No Pipes!

Each model is self contained and utilises the existing swimming pool water supply. Multiple feature schemes can usually be installed and commissioned within a day, making a themed play area a very attractive option.

Simple Retrofit!

Can be installed in or around existing pools. No major building works, no excavations, no buried pipes, no hassle. Durability, ease of installation and virtually no maintenance makes "Play Gear" children's water features the ideal solution.

Please state pool water depth with order



Commercial Water Fun

PGWF001 Interactive frog on a log pedestal



Commercial Water Fun

PGWF002 Interactive elephant
PGWF002A Elephant plinth



Commercial Water Fun

PGWF004 Interactive killer whale



Commercial Water Fun

PGWF003 Interactive fish
PGWF003A Fish plinth



Commercial Water Fun

PGWF006 Twin frog slide



Commercial Water Fun

PGWF011 Interactive crocodile

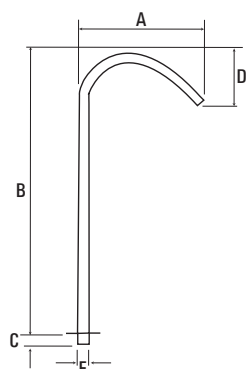
water features for everyone



The kids will love the water play features and the adults just love to relax with wellness products. If you need any help or information please contact:
Export +44 (0) 1993 700744 or
Email: export@certikin.co.uk

Certikin
brings water to life

Water Features



A	B	C	D	E
482	1100	40	217	1.5"

Tahiti - AISI316. Recommended Flow 6m³/h

Code	Description	Price Euros €
13429740	Tahiti water feature body only (add jet) 1.5" threaded connection anchors not required	
13429741	Jet - Type A - add to body	
13429742	Jet - Type B - add to body	
13429743	Jet - Type C - add to body	
13429744	Jet - Type D - add to body	



Jet A



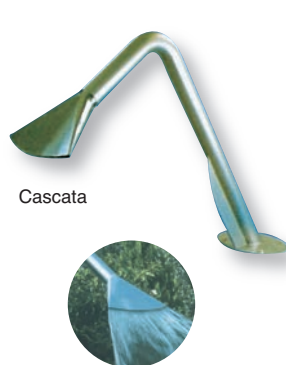
Jet B



Jet C



Jet D



Cascata

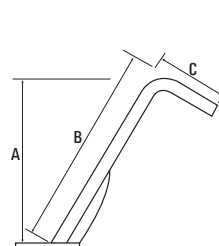


Pelican

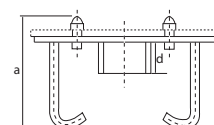
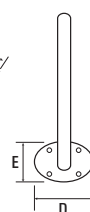
Cascata / Pelican Water Features - AISI316

Recommended Flow 10m³/h

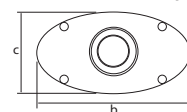
Code	Description	Price Euros €
13429717	Cascata water feature - flat jet - satin finish	
13429716	Pelican water feature - straight jet - satin finish	
13429725	Anchor fixings for Cascata / Pelican	



A	B	C	D	E
815	995	357	300	200



Anchor fixing

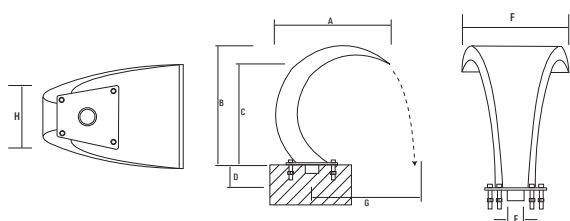


A	B	C	D
200	300	200	45

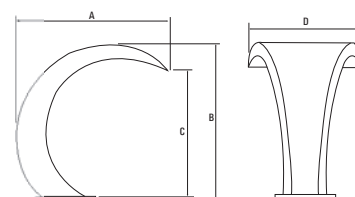


Mini Luna Water Curtain - AISI304 Recommended Flow 20m³/h

Code	Description	Price Euros €
13429732	Mini Luna water curtain 350mm - satin finish 1.5" threaded connect - anchors not required	



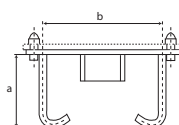
A	B	C	D	E	F	G	H
467	480	395	62	1.5"	350	400	204



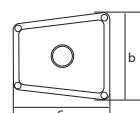
A	B	C	D
673	688	567	500

Luna Water Curtain - AISI316 Recommended Flow 30m³/h

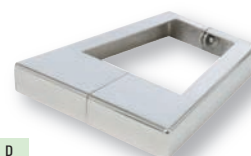
Code	Description	Price Euros €
13429727	Luna water curtain 500mm - satin finish	
13429726	Anchor fixings	
13429729	Base cover plate	



Anchor fixing



A	B	C	D
200	300	300	45



Luna Baseplate